

**SL**

---

**STEPHENS LIFE**

*media kit*

# Why Stephens Life?

Join Stephens Life in delving into local and national matters affecting the people of Columbia every day.

The readers of Stephens Life are educated, cultured and engaged—ideal prospects for your products and/or services.

Stephens Life has a shelf life of ten years, giving your business a lasting impression on the Columbia area and beyond.

This publication has won several prestigious awards and continues to be nominated issue after issue.

<sup>7</sup>

Stephens Life is a home for communication and inspiration, creativity and honesty.

---



Photos by Allison I. Moorman

# Awards

## **The Associated Collegiate Press (ACP)**

2020 Feature Magazine Pacemaker

2019 Feature Magazine Pacemaker

2018 Feature Magazine Pacemaker

Design of the Year for Yearbook/Magazine Page/Spread

## **College Media Association (CMA)**

Best Magazine Entertainment Page/Spread for

“I Like Fashion and Naps”

Best Magazine News Page/Spread for

“The Disruption: A Year of Fractured Fashion”



# Advertising

Let us showcase your business!

\$475 8.375 W x 11 H	\$250 8.375 W x 5.5 H	\$100 2.25 W x 11 H
-------------------------	--------------------------	---------------------------

---

We can also design an advertisement for you.  
Ads and payments are due one month before the end  
of each semester. Please make checks payable to Stephens College.

*Early Bird Discount*

Contact us for due dates to receive 20% off your total.

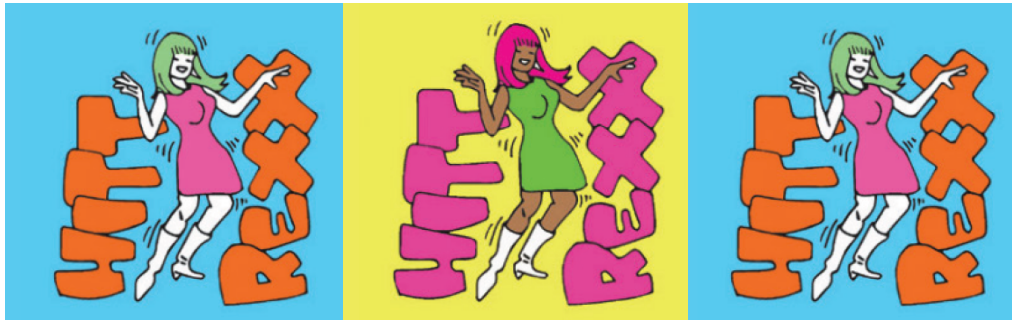
*Ad Preparation*

Send print ads in TIFF or PNG format to  
stephensmagazine@gmail.com.

All photos and images must be a minimum of 300 DPI.



# Past Clients

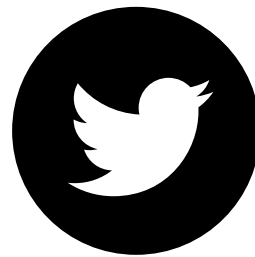
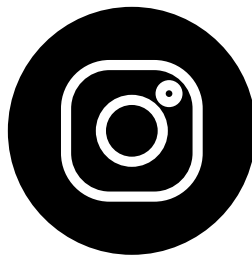




# Social



**@stephens\_life**



[stephenslife.stephens.edu](http://stephenslife.stephens.edu)



# Contact Us



Photo by Aurola Wedman

[stephensmagazine@gmail.com](mailto:stephensmagazine@gmail.com)

Stephens College - Communication Design  
c/o Stephens Life Magazine  
1215 E Broadway St, Columbia, MO 65215

*get a life*